

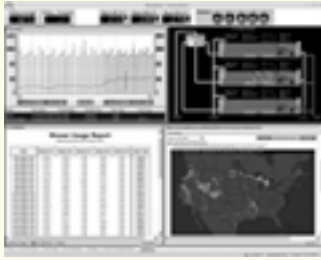
Gas process, refinery software

InfoLink Process Historian combines several software packages applicable to such operations as gas processing and refining.

It includes Canary Trend Historian and Trend Link software, Software Toolbox's symbol library, and optional XLReporter from SyTech to provide a real-time and historical view of a process. You can call up historical data from any point in the past and review trends, HMI screens, and reports — exactly as they occur.

InfoLink runs on any PC including HMI workstations running HMI/SCADA software. It obtains its data via OPC interfaces to PLC, DCS, RTU and other hardware and software packages. It stores data with tags and time stamps for retrieval and display in real-time or playback mode. Full InfoLink details are yours free.

43 **Canary Labs**, 195 Bean Hill Road,
The Brownstone Building, Martinsburg PA 16662



Tunnel, parking facilities fixed gas detection

CPS: Car Park System is launched to regulate and monitor underground parking facility and tunnel ambient air.

The eight-channel digital controller can be configured to monitor 1 to 256 modules up to 3,000 ft away from it with six "smart" transmitter options: four or eight-relay output modules. Several CO, NO, NO₂, CH₄, LPG, and H₂ sensor options are available to monitor a wide range of gasoline, natural gas, diesel-powered, and electric vehicle hazards.

CPS uses digital communication, high-speed data treatment, and smart monitoring of exhaust fans to provide improved air quality and increased safety.

44 **Industrial Scientific Corporation**
1001 Oakdale Road, Oakdale PA 15071



Oil spill, leak detection & alarm

Slick Sleuth Oil Spill Detection & Alarm Systems deliver immediate detection, early warning alert, containment, and prevention of accidental spills.

Designed to avert environmental damage, costly cleanup, and possible fines or regulatory penalties — Slick Sleuth's optical sensor detects small amounts of oil. It is very sensitive to crude, turbine, lube, hydraulic, fuel, or most other hydrocarbon derivatives. This system configures to automatically shut off pumps or valves, plus activate alarms and personnel notification.

Its noncontact design is especially applicable for remote deployment in rugged offshore, inland waterway or sump and separator locations.

45 **InterOcean Systems Environmental Systems Division**
4241 Ponderosa Avenue, Suite A, San Diego CA 92123



Mobile waterjet cutting systems

New **Versacutter portable waterjet cutting and beveling system** is on the market.

As an hydraulically controlled mobile waterjet system, it moves along rigid or flexible track to cut flat or curved surfaces.

Versacutter cuts with a 60,000-psi abrasive waterjet on pipelines, steel reinforced concrete, reactor vessels, and fabricated metal structures.

This new system cuts without flames and does not generate heat. It also eliminates heat-affected zones. The waterjet system is powered by its manufacturer's 60,000-psi intensifier pumps — available in electric or diesel models up to 280 hp.

Complete Versacutter specifics are yours free.

46 **Jet Edge Incorporated**
12070 43rd Street NE, St. Michael MN 55376-8427



Pumps handle volatile fluids

BCP petroleum pumps like this handle volatile fluids saturated with air and steam without mechanical contaminants. These include petroleum, naphtha, or ammonia.

These centrifugal, self priming, horizontal designs are mainly used to load and unload tankers or lorry tanks, in refining, and storage tanks.

Offered in single or multistage configuration, BCP can be driven by electric drive on the same base plate. The pump's self priming feature is via vacuum rotor enclosed in the unit.

Complete, additional BCP pump details are free.

47 **MZT Pumpi**
Pero Nakov bb, 1000 Skopje Macedonia



Grain cleaning screeners aid ethanol production process

Three **ROTEX screeners** offer grain cleaning solutions for ethanol production.

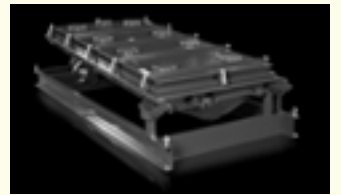
All are designed to "improve the success of applications involving corn ethanol and other grain applications," according to their maker.

The screeners remove off-size particles and contaminants plus offer higher throughput than other types. They are rugged, durable and built with such heavy-duty features as wear-resistant liners to withstand abrasion.

The screeners are applicable at the beginning of ethanol production. They separate unwanted oversized and fine particles from whole corn based upon size. Used at the outset of the process, these screeners are said to increase product quality and reduce maintenance costs from damage to downstream equipment exposed to grit and debris.

Full screeners information is free for the asking.

48 **ROTEX Global LLC**
1230 Knowlton Street, Cincinnati OH 45223





Karmsund Maritime
OFFSHORE SUPPLY AS

Ring joint for sealing & surveillance

The efficient solution for flanged connections

By pressure testing the flanges ring room. Correct installation will be verified. Indicator will monitor any future leakages.

Time, cost and safety efficient

Having too many leakages in flanged connections..



«Correct installation will be verified by pressure testing the flanges ring room. Future leakages will be monitored by an indicator»

STATOIL

P.O.Box 484 - N-4291 Kopervik - Norway - Telephone +47 52 84 43 40 - Telefax +47 52 84 43 41

Intelligent pumps avoid leak, seal, overheat problems

A new generation of **intelligent pumps** comprise smart technologies to eliminate problems associated with leaks, overheated bearings, and defective seals.

Models also incorporate automatic safety reactions to prevent disturbances before they happen for high pump stability, long service life, and lower total cost of ownership.

Among pump technologies are "condition monitoring" of major mechanical components facilitated by "Allready Box" which quickly recognizes a leak on the shaft seal or first indications of bearing damage.

"Allseal" also monitors mechanical seals via optoelectronic sensor that detects wear early enough to avoid unexpected circumstances which lead to downtime.

49 **Allweiler AG**
Allweilerstr. 1
78315 Radolfzell Germany

